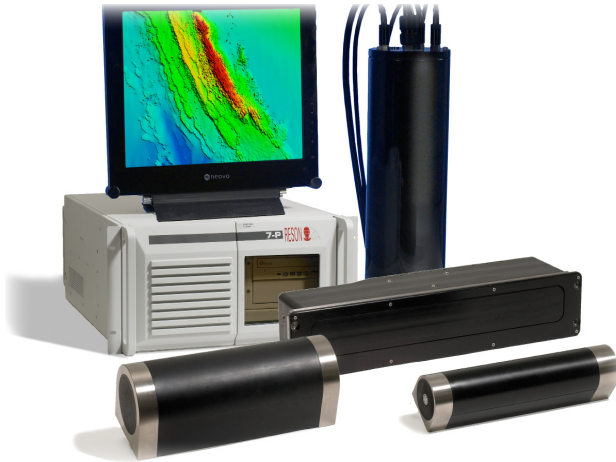


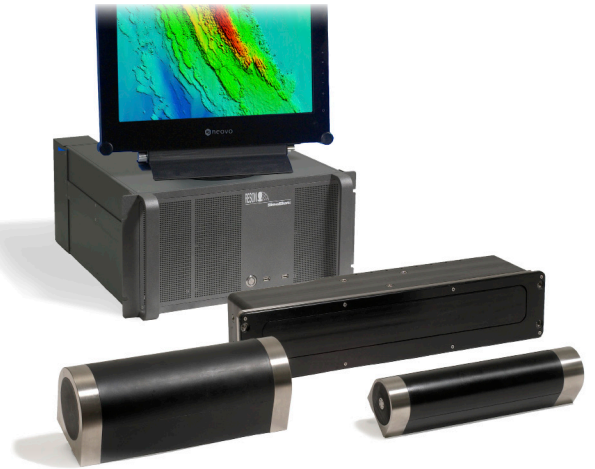


# SeaBat 7125

HIGH-RESOLUTION MULTIBEAM ECHOSOUNDER SYSTEM



ROV and AUV



SV

- 512 beams and equi-distant footprints providing extremely high density and maximizing swath width
- Real-time roll stabilisation maximizing usable swath
- Dual frequency provides seamless coverage from 0.5 to 500m depth
- Compliance with IHO SP44Ed5 over entire depth range
- Advanced diagnostics
- High ping rate allows high-speed operations without compromising data density

## SeaBat 7125

The new generation SeaBat 7125 builds on the field experience and feedback from many users around the world and brings unparalleled resolution and installation flexibility. The system is available in three separate configurations; one designed specifically for installation on small survey vessels and a 6000m depth rated system for either ROV or AUV use.

Each of these configurations utilise the same transducer set and provide identical high performance, superlative data quality, features and ease of use over depths from 0.5m to 500m.

Special emphasis has been put on maximizing operational efficiency and features such as variable swath width and roll stabilisation combined with a high ping rate and excellent data quality .

### Surface Vessel installation

The new SeaBat 7125-SV is a highly integrated single or dual frequency system designed with ease of installation and operation as a high priority.

The system consists of a surface transceiver with integrated multiport card and a standard 25m cable run to the transducers. The transceiver hardware is suitable for running data acquisition software and is available with RESON PDS2000 software pre-installed and configured.

### ROV

For deep-water use the ROV version of the SeaBat 7125 has a 6000m depth rating and includes a 6000m rated titanium interface bottle. The system performance and feature set is identical to the other members of the 7125 family thus providing commonality and ease of use.

### AUV

The AUV version of the 7125 provides on-board data processing and logging as well as interface to third party sensors. The electronics are supplied mounted on an aluminium frame for ease of integration and an optional 6000m depth-rated titanium electronics housing is available. The 7125-AUV provides high quality data and performance commensurate with the other versions of the 7125.

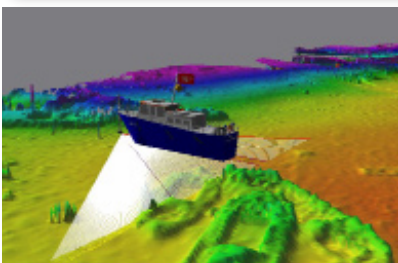
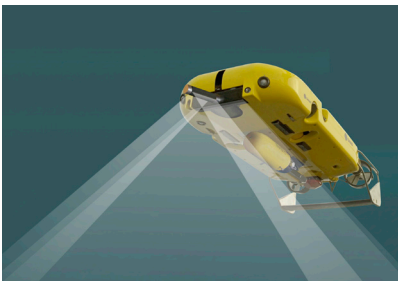
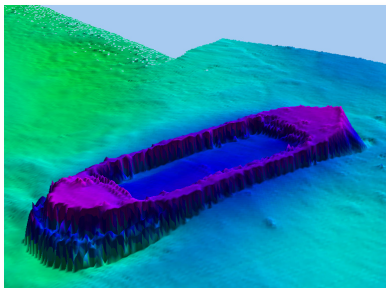


# SeaBat 7125

HIGH-RESOLUTION MULTIBEAM ECHOSOUNDER SYSTEM

## OPTIONS

- Mounting Bracket with Faring
- SVP-70 sound velocity Probe with 25m Cable
- Extended Warranty / Support & Maintenance Contracts
- Fiber-Optic Conversion for ROV Installations
- System Integration & Training



## SYSTEM CHARACTERISTICS

	7125 SV	7125 ROV	7125 AUV
* EA= Equi-angle / ED= Equi-distant			
Frequency	200 or 400 kHz (dual freq. available)		
Along-track transmit beamwidth	2.2° (± 0.5°) at 200 kHz / 1° (± 0.2°) at 400 kHz		
Across-track receive beamwidth	1.1° (± 0.05°) at 200 kHz / 0.54° (± 0.03°) at 400 kHz		
Max ping rate	50 Hz (± 1 Hz)		
Pulse length	33 µsec to 300 µsec		
Number of beams	256EA*/256ED* at 200kHz 256EA*, 512EA*, 512ED* at 400kHz		
Max Swath angle	128°		
Depth resolution	6mm		
Data output	Bathymetry, sidescan & snippets 7K data format Gbit Ethernet		
Power requirement	110/220 VAC 50/60 Hz 500W average	48V DC(±10%)  110W max	48V DC (±10%)  200W max
Transducer cable length	25m standard 50m optional 10m optional	3m standard 10m optional	3m standard 10m optional
LCU to processor cable length	N/A	25m standard 6m optional 5m pigtail	N/A
System depth rating	50m	6000m	6000m optional
Temperature operating	0° to +40° C		
Temperature storage	-30° to +55° C		

## COMPONENT

	7125 SV	7125 ROV	7125 AUV
EM 7200 Receiver	✓	✓	✓
TC2160 400kHz Projector	✓	✓	✓
TC2163 200 kHz projector (optional)	✓	✓	✓
7-L Link Control Unit	✗	✓	✗
7-P sonar Processor Unit with monitor, Keyboard and Pointer Device	✗	✓	✗
SV Transceiver with monitor, Keyboard and Pointer Device	✓	✗	✗
7-I Integrated Control & Processor Unit	✗	✗	✓
Standard Cable Set	✓	✓	✓
Shipping cases, manuals & accessories	✓	✓	✓

## WEIGHT & DIMENSIONS

Component	TC2160 400 kHz projector	TC2163 200 kHz projector	EM7200 200/400 kHz-receiver	Sonar processor	LCU bottle	ICPU frame
Height (mm)	77	115	102	5U	530	172
Width (mm)	62	100	495	19"	Ø174	166
Depth (mm)	285	280	131	557	N/A	497
Weight-kg/air	2.75	7.5	10.6	20	15.7	10
Weight-kg/water	1.75	5	5.5	N/A	5.2	N/A

RESON reserves the right to change specifications without notice. © 2006 RESON A/S  
For Acoustical Measurement Accuracy please refer to [www.reson.com](http://www.reson.com) or contact sales.

**RESON A/S**  
Denmark  
Tel: +45 4738 0022  
E-mail: [reson@reson.com](mailto:reson@reson.com)

**RESON Inc.**  
USA  
Tel: +1 805 964-6260  
E-mail: [sales@reson.com](mailto:sales@reson.com)

**RESON Offshore Ltd.**  
United Kingdom  
Tel: +44 1224 709 900  
E-mail: [sales@reson.co.uk](mailto:sales@reson.co.uk)

**RESON GmbH**  
Germany  
Tel: +49 431 720 7180  
E-mail: [reson@reson-gmbh.de](mailto:reson@reson-gmbh.de)

**RESON B.V.**  
The Netherlands  
Tel: +31 (0) 10 245 1500  
E-mail: [info@reson.nl](mailto:info@reson.nl)

**RESON (Pte.) Ltd.**  
Singapore  
Tel: +65 6725 9851  
E-mail: [sales@reson.com](mailto:sales@reson.com)

[www.reson.com](http://www.reson.com)